



POWER	RMS 2Ω	4x230W
POWER	RMS 4Ω	4x150W
BRIDGED POWER	RMS 4Ω	2x460W

MAX A2-150.4

GET READY FOR RAW POWER

Feed your system with the raw power from a MAX A2 amplifier! We welcome you to the next level with oversized capacitors and MOSFET transistors on a solid, double-sided PCB!

DUAL DIFFERENTIAL INPUT

The MAX A2 amplifiers are equipped with 2DP™, a state-of-the-art pre-amplifier with dual differential input circuits, because just like you we don't like distortion. The 2DP™ will keep the unwanted noise at a minimum without compromising on the most important thing—awesome power.

HIGH QUALITY HIGH PASS

With great power comes the need for great precision crossovers. The MAX A2 have high quality 12dB high-pass filters and combined low- and band-pass filters, and to add even more control these CLASS AB amps come with symmetrical push-pull power stage and AAB (Active Auto Bias)!

(And just to be sure, we have installed advanced safety systems including soft start and shutdown functions to protect your system against voltage spikes and drops, overload, overheating and short circuiting).

SPECIFICATIONS

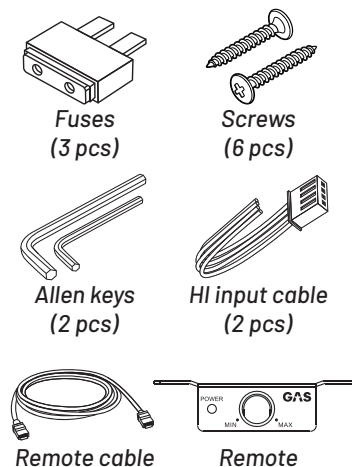
MAX A2-150.4	
Component	Amplifier
Channels	Four
Input Mode	2Ch / 4Ch
Power RMS (2 Ohm)	4x230W*
Power RMS (4 Ohm)	4x150W*
Bridged Power RMS (4 Ohm)	2x460W*
Frequency Response	10-45000Hz
Low Pass Filter	30-4000Hz
High Pass Filter	10-4000Hz
S/N Ratio (A-weighted)	>102dB
Bass EQ	0-12 dB @45Hz
Crossover Slope	12dB
Power Voltage	10-16V
REM voltage	10-16V
Input Sensitivity	0.5-6V
Input Impedance	10K Ohm
T.H.D	<0.05%
Power Fuse	3x35A
Damping Factor	>150
High Level Input	Yes
RCA Line Out	N/A

* Power Rating @14,4V

RECOMMENDED CABLES

CABLE	REC. MIN SIZE	MAX SIZE
Power cable	4AWG (20mm²)	4AWG (20mm²)
Speaker cable	14AWG (1,5mm²)	12AWG (4mm²)
REM cable	18AWG (0,75mm²)	12AWG (4mm²)

INCLUDED ACCESSORIES



SIDE PANELS

